

Service Manual

Comact Plain Paper Fax



KX-FP81BX
KX-FP81CX
KX-FP82CX
KX-FP85BX
KX-FP85CX
KX-FP88CX

(for Asia, Middle Near East and Africa)

Subject : Parts Change

Please file and use this supplement manual together with the original service manuals for the following models.

Model No.	Order No.	Supplement No.
KX-FP81BX / KX-FP81CX / KX-FP82CX	KMF0006416C3	1
KX-FP85BX / KX-FP85CX	KMF0007429C3	1
KX-FP88CX	KMF0010449C3	1

WARNING

This service information is designed for experienced repair technicians only and is not designed for use by the general public. It does not contain warnings or cautions to advise non-technical individuals of potential dangers in attempting to service a product. Products powered by electricity should be serviced or repaired only by experienced professional technicians. Any attempt to service or repair the product or products dealt with in this service information by anyone else could result in serious injury or death.

Panasonic

© 2001 Kyushu Matsushita Electric Co., Ltd. All rights reserved. Unauthorized copying and distribution is a violation of law.

1 REPLACEMENT PARTS LISTS

1.1. REFERENCE CHART

Reason for Change	
*The following items (1-8) indicate the reason for change. See the "Notes" column for each part in ORIGINAL AND NEW PARTS COMPARISON LIST(S) .	
1. Improve performance	Remarks: *a: To improve the electric conduction. *b: To share the part with other models. *c: For improvement of copy performance. *d: To improve how to set up. *e: Sales company's request
2. Change of material or dimension	
3. To meet approved specification	
4. Standardization	
5. Addition	
6. Deletion	
7. Correction	
8. Other	

Interchangeability Code		
**The following items (V-Z) indicate the interchangeability. See the "Notes" column for each part in ORIGINAL AND NEW PARTS COMPARISON LIST(S) .		
Parts	Set Production	
V Original New	Early (before change) Late (after change)	Original or new parts may be used in early or late production set. Use original parts until exhausted, then stock new parts.
W Original New	Early (before change) Late (after change)	Original parts may be used in early production sets only. New parts may be used in early or late production sets. Use original parts where possible, then stock new parts.
X Original New	Early (before change) Late (after change)	New parts only may be used in early or late production sets. Stock new parts.
Y Original New	Early (before change) Late (after change)	Original parts may be used in early production sets only. New parts may be used in late production sets only. Stock both original and new parts.
Z Other		

Note:

Alphabets in the "Remarks" column in the following lists correspond to the alphabets in the "Remarks" in **REFERENCE CHART**.

1.2. ORIGINAL AND NEW PARTS COMPARISON LIST(S)

1.2.1. KX-FP81BX, KX-FP81CX, KX-FP82CX

Ref No.	Part No.		Part Name & Descriptions	Pcs/Set	Remarks	Notes		Suffix
	Original Part No.	New Part No.						
CABINET AND ELECTRICAL SECTION								
32	PFHR1189Z	PFHR1189Y	GUIDE. THERMAL HEAD (LEFT)	1	*c	1	W	
34	PFHR1190Z	PFHR1190Y	GUIDE. THERMAL HEAD (RIGHT)	1	*c	1	W	
35	PFHR1192Y	PFHR1192X	COVER. THERMAL HEAD	1	*c	1	W	
36	PFHX1342X	PFHX1342Z	INSULATOR.STATICELEC. (RIGHT)	1	*c	1	V	
45	PF0U1022Z	PF0U1022Y	PHOTO ELECTRIC TRANSDUCER. IMAGE SENSOR(CIS)	1	*a	1	V	
47	PFPE1074Z	Not Used	(for KX-FP81BX / KX-FP81CX)	0	Deleted	6	---	
51	-----	PFHX1457Z	SPACER.SHEET (Refer to UPPER CABINET SECTION)	2	*c	5	W	
59	-----	PFHX1433Z	SPACER.SHEET (Refer to BACK COVER 1)	1	*c	1	X	
65	PFKV1025Y1	PFKV1025X1	COVER. UPPER TURN (Refer to BACK COVER 1)	1	*d	1	W	
132	PFUA1024Z	PFZMFM189E	CHASSIS KIT. GEAR BASE (Refer to MOTOR SECTION)	1	*b	4	V	
Note: Change Parts of Ref No.32 and No.34 at the same time.								
ACCESSORIES AND PACKING MATERIALS								
A6	PFQX1460Z	PFQX1460Y	INSTRUCTION BOOK	1	*b	4	X	
A7	PFQW1404Z	PFQW1511Z	INSTRUCTION BOOK (QUICK START SHEET) (for KX-FP81BX)	1	*b	5	X	
P1	PFPK1713Z-M	PFPK1713Y-M	GIFT BOX (for KX-FP81CX)	1	*e	8	V	

1.2.2. KX-FP85BX, KX-FP85CX

Ref No.	Part No.		Part Name & Descriptions	Pcs/Set	Remarks	Notes		Suffix
	Original Part No.	New Part No.						
CABINET AND ELECTRICAL SECTION								
32	PFHR1189Z	PFHR1189Y	GUIDE. THERMAL HEAD (LEFT)	1	*c	1	W	
34	PFHR1190Z	PFHR1190Y	GUIDE. THERMAL HEAD (RIGHT)	1	*c	1	W	
35	PFHR1192Y	PFHR1192X	COVER. THERMAL HEAD	1	*c	1	W	

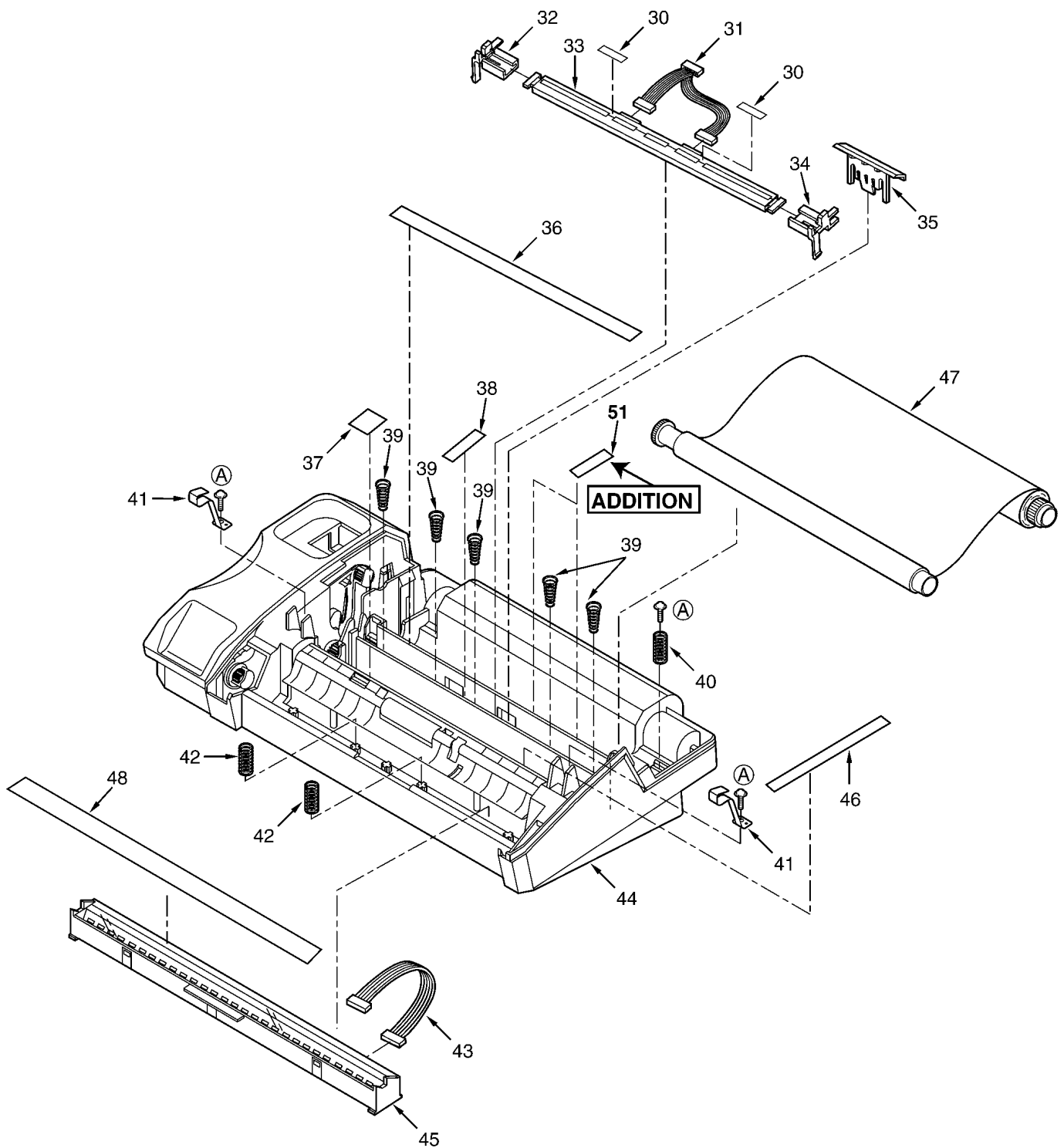
Ref No.	Part No.		Part Name & Descriptions	Pcs/Set	Remarks	Notes		Suffix
	Original Part No.	New Part No.						
36	PFHX1342X	PFHX1342Z	INSULATOR.STATICELEC. (RIGHT)	1	*c	1	V	
45	PF0U1022Z	PF0U1022Y	PHOTO ELECTRIC TRANSDUCER. IMAGE SENSOR(CIS)	1	*a	1	V	
50	PFHX1423Z	-----	SHEET, SPACER	0	Deleted	6	---	
51	-----	PFHX1457Z	SPACER.SHEET (Refer to UPPER CABINET SECTION)	2	*c	5	W	
59	-----	PFHX1433Z	SPACER.SHEET (Refer to BACK COVER 1)	1	*c	1	X	
65	PFKV1025Y1	PFKV1025X1	COVER. UPPER TURN (Refer to BACK COVER 1)	1	*b	1	W	
68	PFUA1025Y	PFUA1025W	CHASSIS. UPPER TURN	1	*b	4	W	
132	PFUA1024Z	PFZMFM189E	CHASSIS KIT. GEAR BASE (Refer to MOTOR SECTION)	1	*b	4	V	
Note: Change Parts of Ref No.32 and No.34 at the same time.								
ACCESSORIES AND PACKING MATERIALS								
A6	PFQX1460Z	PFQX1460Y	INSTRUCTION BOOK	1	*b	4	X	
A7	PFQW1404Z	PFQW1511Z	INSTRUCTION BOOK (QUICK START SHEET) (for KX-FP85BX)	1	*b	5	X	
P1	PFPK1728Z-M	PFPK1728Y-M	GIFT BOX (for KX-FP85CX)	1	*e	8	V	

1.2.3. KX-FP88CX

Ref No.	Part No.		Part Name & Descriptions	Pcs/Set	Remarks	Notes		Suffix
	Original Part No.	New Part No.						
CABINET AND ELECTRICAL SECTION								
36	PFHX1342X	PFHX1342Z	INSULATOR.STATICELEC. (RIGHT)	1	*c	1	V	
45	PF0U1022Z	PF0U1022Y	PHOTO ELECTRIC TRANSDUCER. IMAGE SENSOR(CIS)	1	*a	1	V	

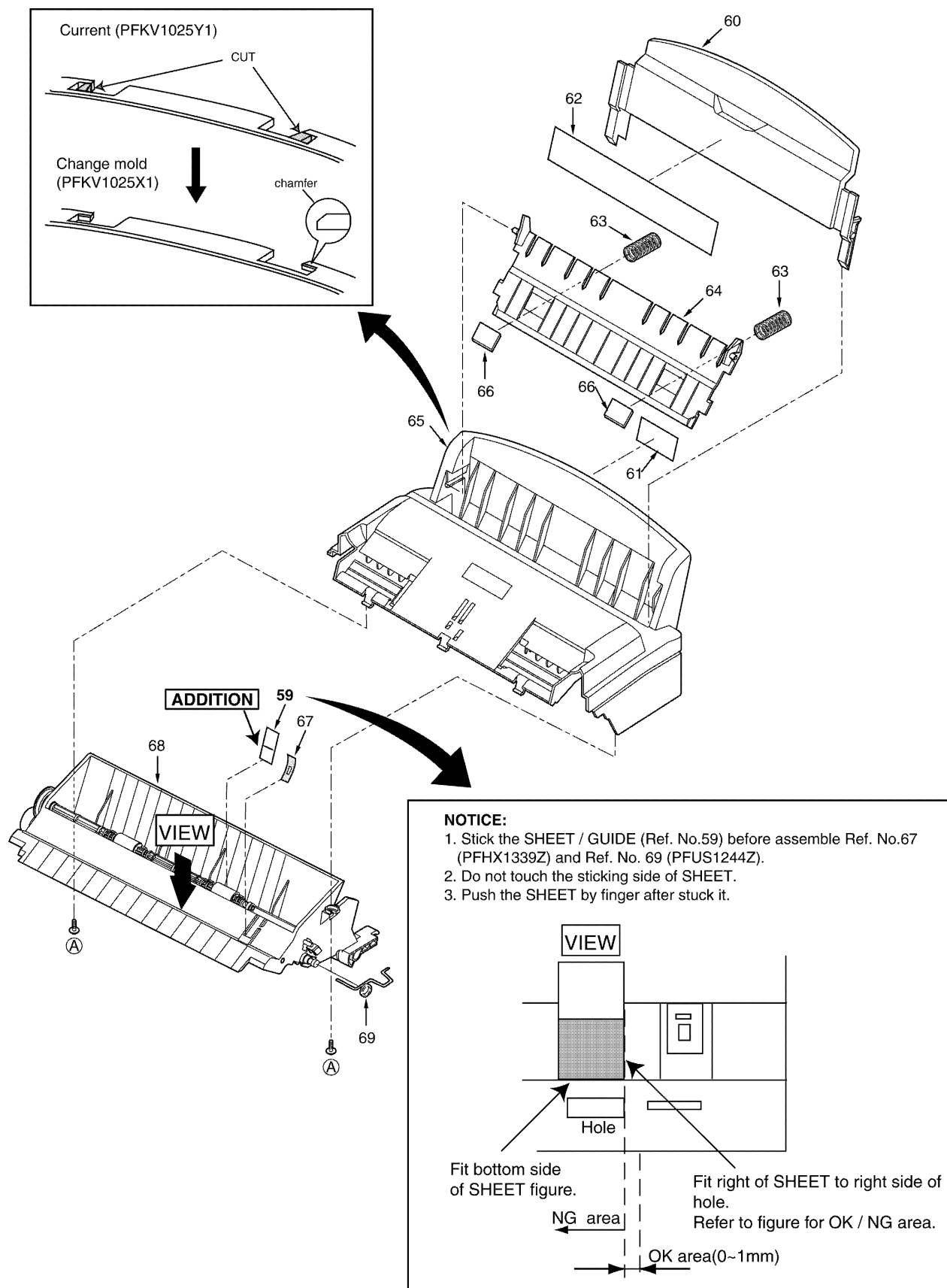
2 CABINET, MECHANICAL AND ELECTRICAL PARTS LOCATION

2.1. UPPER CABINET SECTION



2.2. BACK COVER SECTION

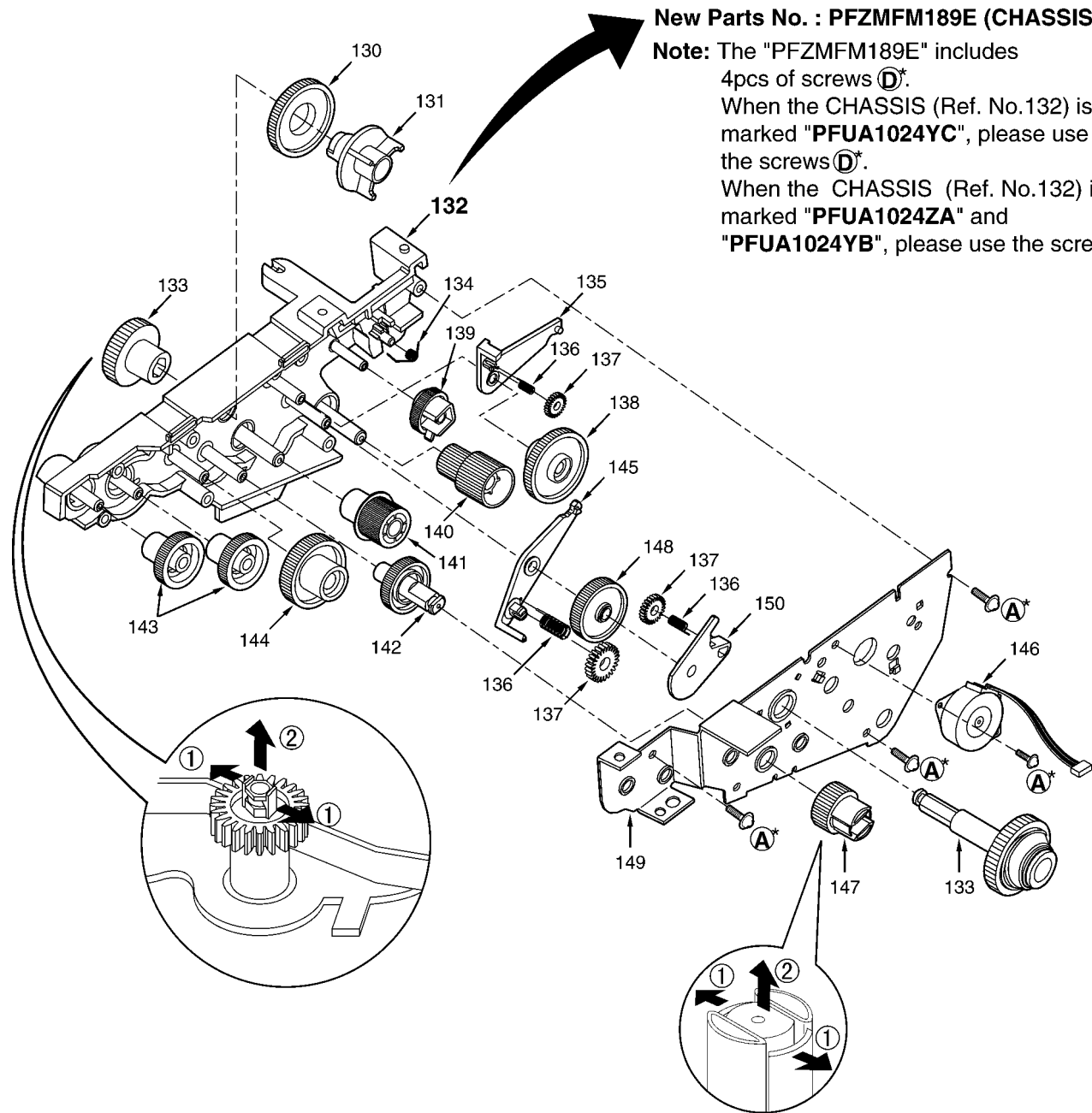
2.2.1. BACK COVER 1

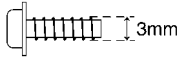
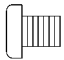

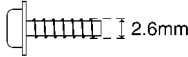


2.3. MOTOR SECTION

New Parts No. : PFZMFM189E (CHASSIS KIT)

Note: The "PFZMFM189E" includes 4pcs of screws ①.
When the CHASSIS (Ref. No.132) is marked "PFUA1024YC", please use the screws ①.
When the CHASSIS (Ref. No.132) is marked "PFUA1024ZA" and "PFUA1024YB", please use the screws ②.



	Part No.	Illustration
①	XTW3+S10P	
②	XSB4+6	
③	XTW3+U14L	
④	XTW26+S10P	

TN
KXFP81BX, KXFP81CX
KXFP82CX, KXFP85BX
KXFP85CX, KXFP88CX